



• ScaleX2® (SX2)

A Water Softener Alternative

Water Pre-Treatment for Humidity Control Systems

Chemical-Free Scale Prevention

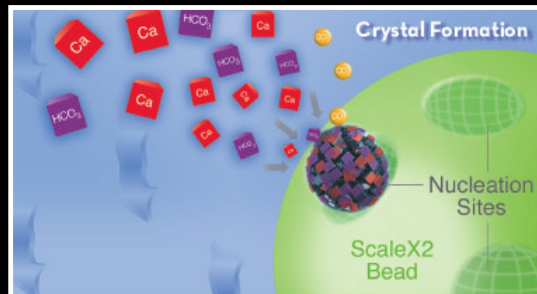
Template Induced Crystallization

(TIC): Effective Scale Prevention – Instantly transforms dissolved calcium carbonate ions into harmless and inactive microscopic crystals that become suspended in solution greatly reducing the potential for scale formation.

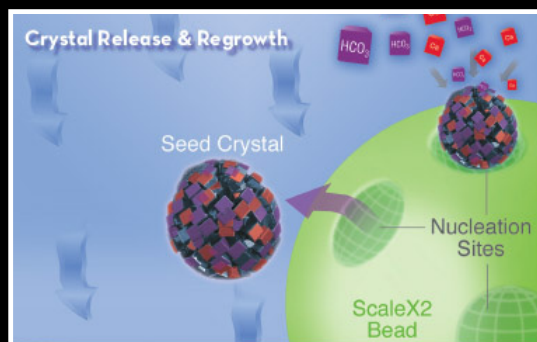
- No salt
- No chemicals
- No electricity

• **Tested** – by an independent laboratory against the international protocol for scale prevention – ScaleX2® achieved a 99.6% effectiveness rating – the highest among all water softener alternatives. Used in business applications successfully for 8 years.

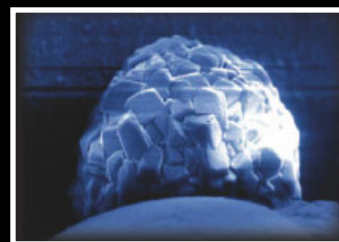
• **Simple & Efficient Operation** – Converts dissolved hardness ions (scale-causing calcium carbonate) into harmless, inactive microscopic crystals - No backwash water waste – Long lasting media-not consumed by the reactions – Great fit for corporate “Green” programs or initiatives.



Atomic sized nucleation sites on the surface of small polymer beads convert dissolved hardness into microscopic crystals.



Once the crystals grow to a certain size they are released from the bead. The crystals in solution keep the hardness out of the water so that it can't form scale or interfere with soap.



When the crystals are large enough, they break free and are carried away with the flow of water.

Nano-Crystal observed on the ScaleX2 media surface. Photo by the Scanning Electron Microscope.

Effective – Low Cost – Low Maintenance Scale Prevention



Specifications:

Water Chemistry Components & Application Ranges

(Use only on municipal water)

- pH between 6.5 to 8.5
- Hardness, max. 25 grains (428 mg/l CaCO₃)
- Water Temperature 41 to 140° F (5-60° C)
- Chlorine less than 3 ppm
- Iron maximum 0.3 mg/l
- Manganese maximum 0.05 mg/l
- Copper maximum 0.3 mg/l
- Oil & H₂S Remove prior to **ScaleX2®**
- Polyphosphates Remove prior to **ScaleX2®**

Regulatory Approvals:



The ScaleX2® filter cartridge in the SX2-11 and SX2-12 is Tested and Certified by NSF International against NSF/ANSI Standard 42 for materials and structural integrity requirements only.

NOTE: Testing was performed under standard laboratory conditions, actual performance may vary. It is recommended that you have your water supply tested to determine your actual water treatment requirements.

Model SX2-11

Capacity
1 gpm



Dimensions
14.5" H
8.5" W
5" D

\$252.35

Weight
8 lbs

Cartridge
Annual
Cartridge
Replacement
SCLX2-1

\$87.55

Model SX2-12

Capacity
2 gpm



Dimensions
25" H
8" W
5" D

\$339.90

Weight
10 lbs

Cartridge
Annual
Cartridge
Replacement
SCLX2-2

\$132.87

Model SX2-12B

Capacity
4 gpm



Dimensions
28.25" H
11.75" W
8" D

\$504.70

Weight
16 lbs

Cartridge
Annual
Cartridge
Replacement
SCLX2-4

\$285.31

- Each New ScaleX2 Model Includes 2 Cartridges at time of order (2 year supply / 1 cartridge per year).
- Larger Systems available.
- Operation: with adequate system pressure and yearly filter change, normal operation is completely automatic.
- Routine Maintenance: yearly filter change and/or replacement of sump O-rings if needed.
- Maximum pressure: 125 psi; Inlet/Outlet Connections: 1/2" frpt; Max. Temp: 100° F / Min. Temp: 35° F
- Install a 1/2" full-flow ball valve on the water supply side to the ScaleX2 unit.
- ScaleX2, when included upon ordering a new high pressure system from IHC, is shipped separately to the customer location and installed either on the pump skid or on in a convenient location on the incoming water supply line.
- Replacement Parts for all three sizes which may be special ordered include: the cartridge filter, sump housing, sump O-ring, Inlet Ball Valve, Wrench and Pressure Relief Button Kit.